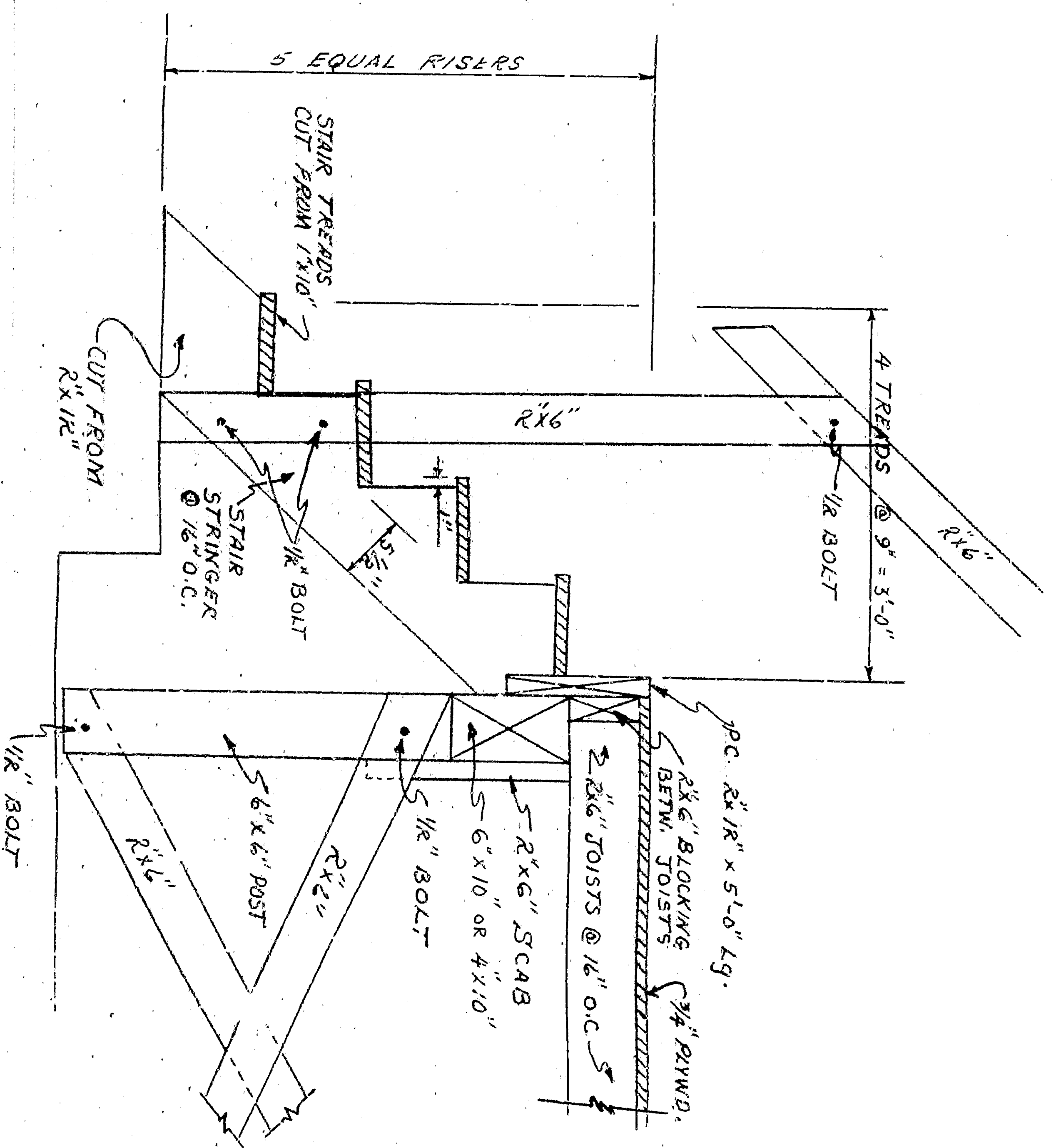


SIDE ELEVATION

Scale: 1/4" = 1'-0"

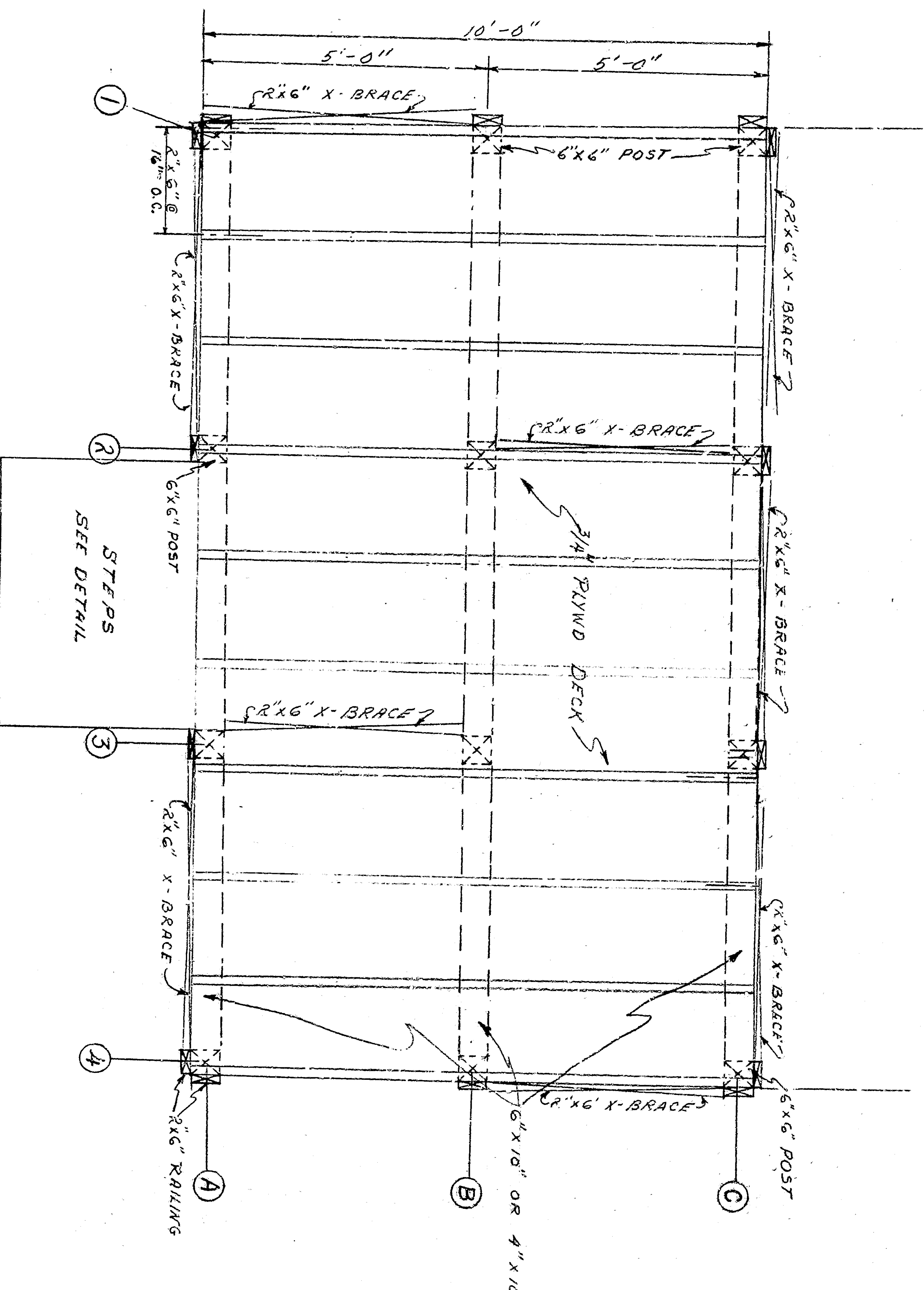


DETAIL STEPS

Scale: 1/2" = 1'-0"

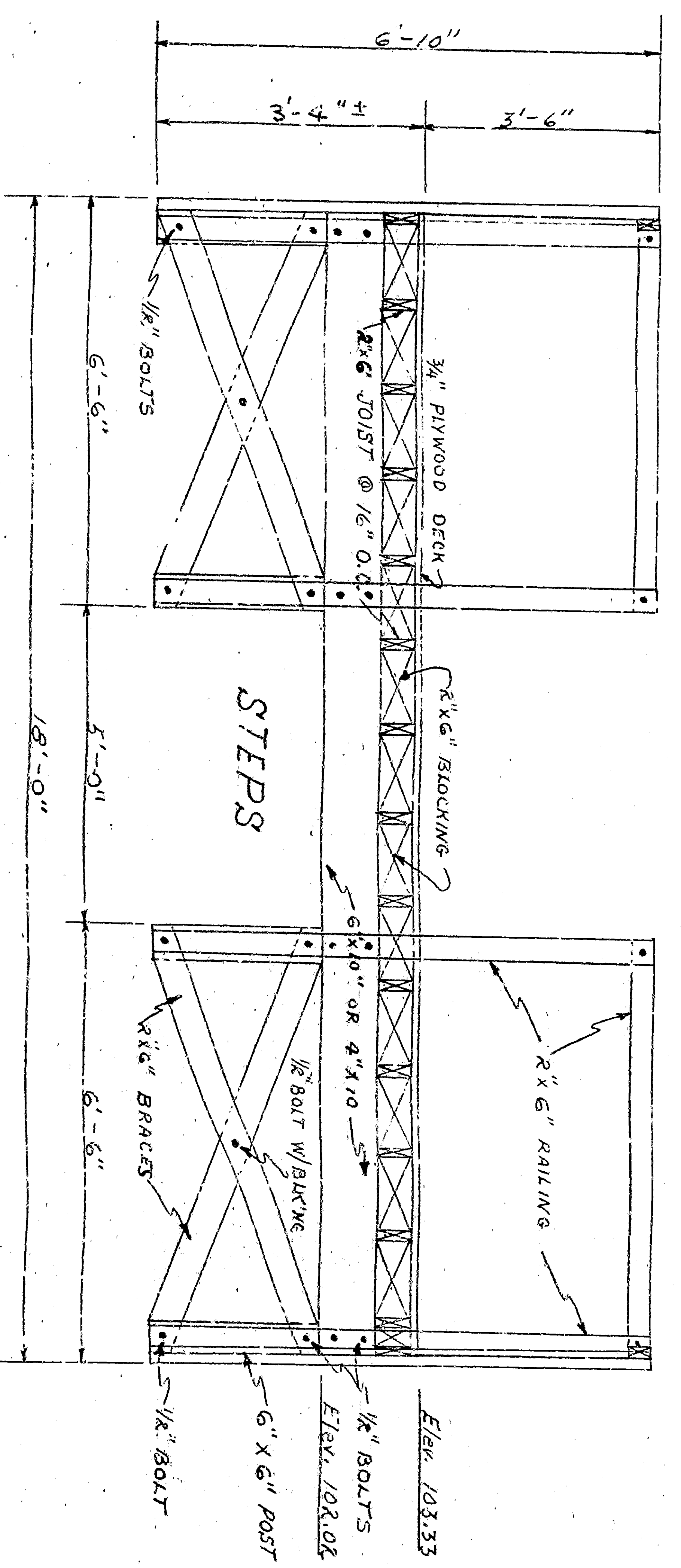
6"x6" POST		LENGTH
A-1	8'-10"	
A-2	8'-10"	
A-3	8'-10"	
A-4	8'-10"	
B-1	11'-0"	
B-2	11'-0"	
B-3	11'-0"	
B-4	11'-0"	
C-1	11'-0"	
C-2	11'-0"	
C-3	11'-0"	
C-4	11'-0"	

NOTE:  
PLYWOOD TO JOISTS - 9d @ 6" O.C. ON EDGES & 1/2" O.C. OTHERWISE.  
JOISTS TO BEAMS - 10d TOLF NAIL.



PLAN

Scale: 1/4" = 1'-0"



REAR ELEVATION

Scale: 1/4" = 1'-0"

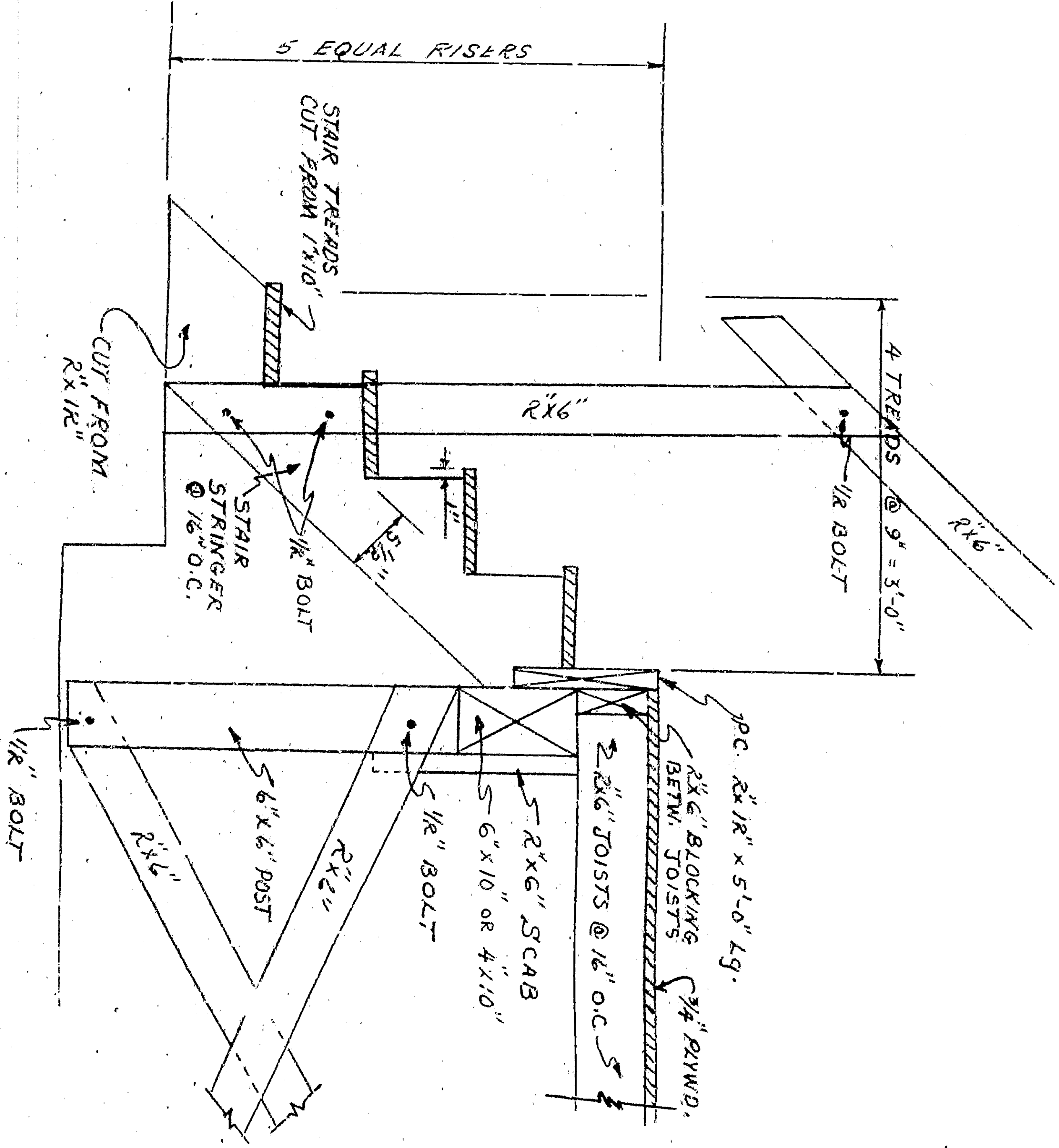
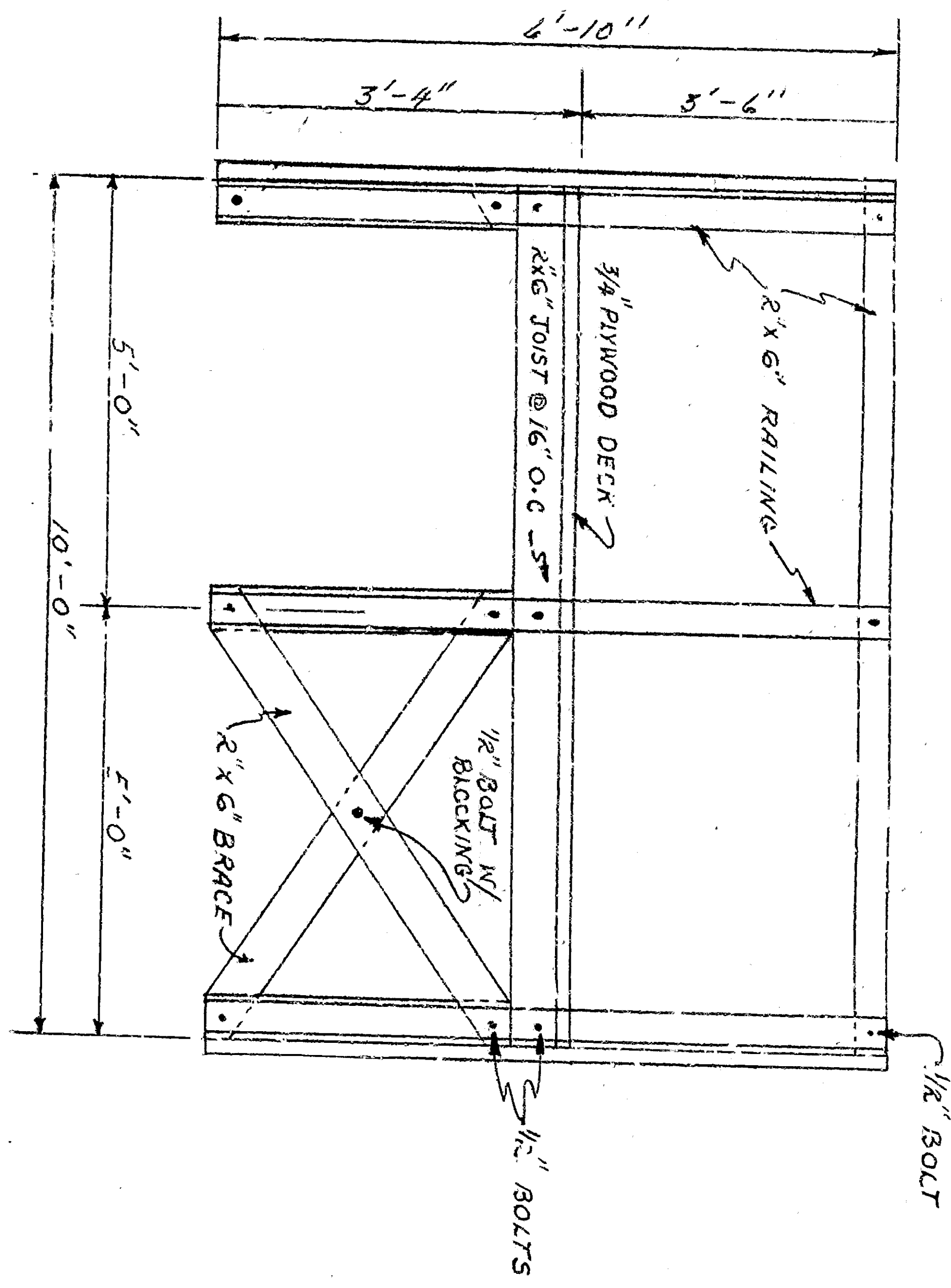
DRAWN BY  
CHECKED BY

DATE

10/20/53

1953



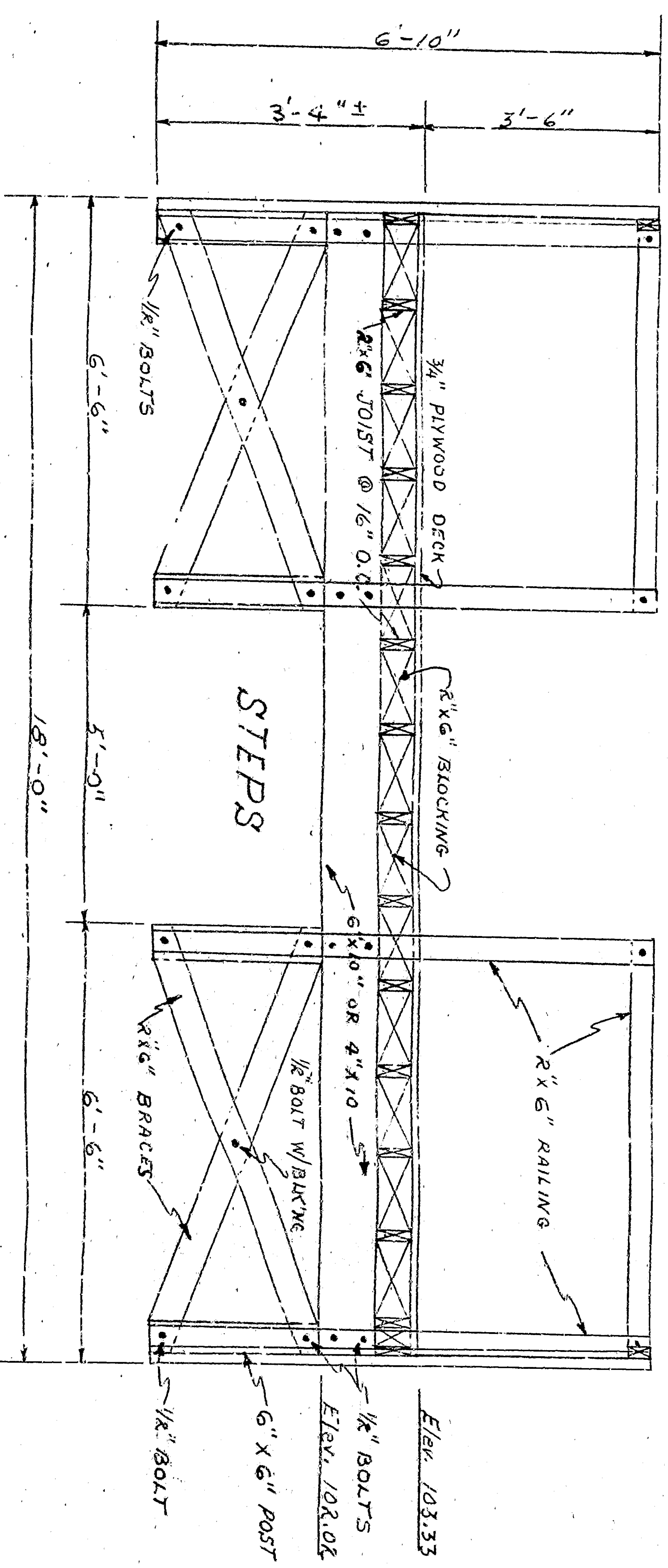
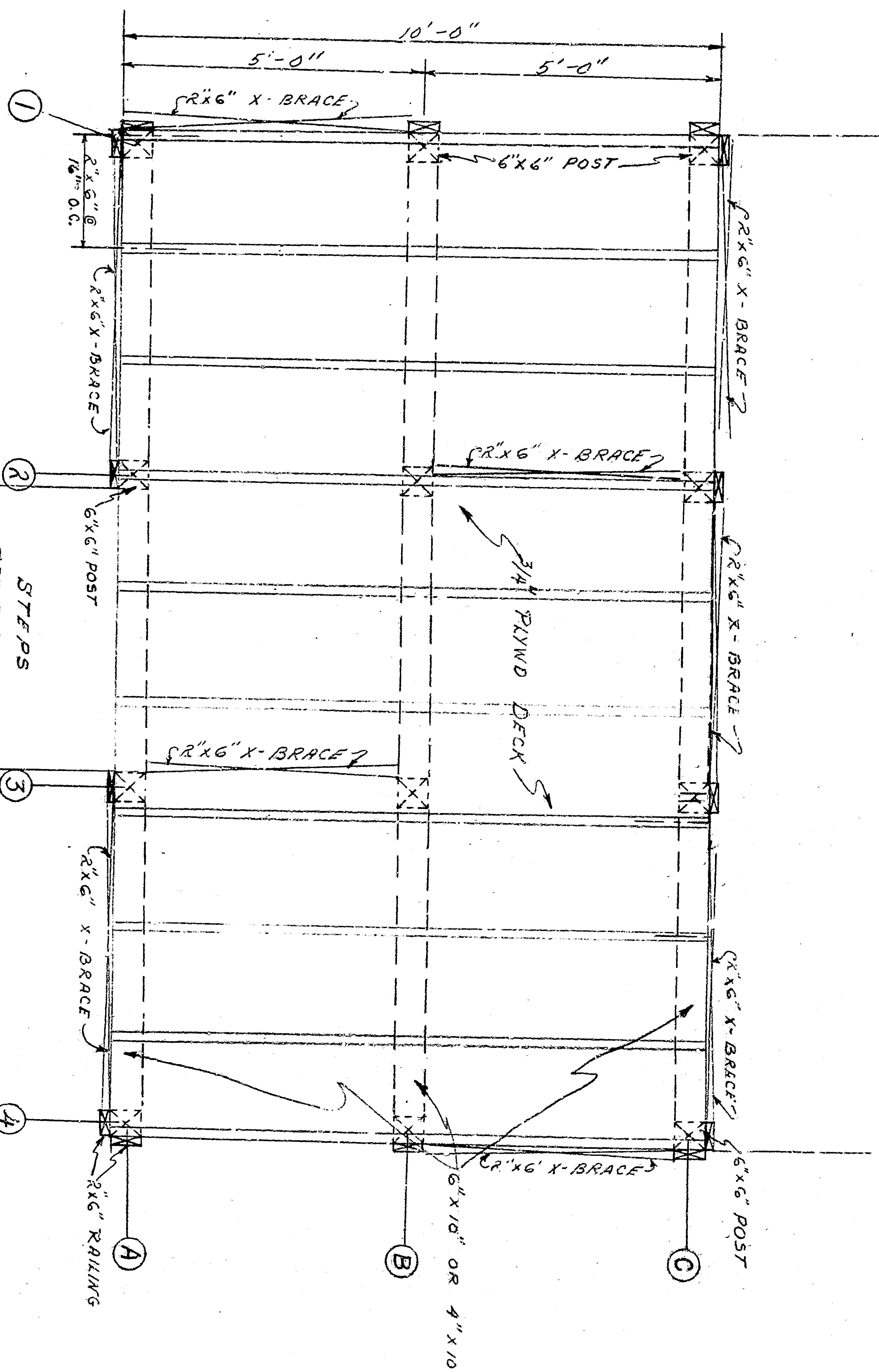


SIDE ELEVATION

Scale: 1/2" = 1'-0"

6"x6" POST		LENGTH	
A-1	1'-0"	A-1	1'-0"
A-2	1'-0"	A-2	1'-0"
A-3	1'-0"	A-3	1'-0"
A-4	1'-0"	A-4	1'-0"
A-5	1'-0"	A-5	1'-0"
B-1	1'-0"	B-1	1'-0"
B-2	1'-0"	B-2	1'-0"
B-3	1'-0"	B-3	1'-0"
B-4	1'-0"	B-4	1'-0"
C-1	1'-0"	C-1	1'-0"
C-2	1'-0"	C-2	1'-0"
C-3	1'-0"	C-3	1'-0"
C-4	1'-0"	C-4	1'-0"

NOTE: PLYWOOD TO JOISTS - 9' @ 6" O.C. ON EDGES 1/2" O.C. OTHERWISE. JOISTS TO BEAMS - 10' @ 70# NAIL.



DETAIL STEPS

Scale: 1/2" = 1'-0"

REAR ELEVATION

Scale: 1/2" = 1'-0"

DESIGNED BY

CHECKED BY

DATE